



GrabIt Pro Help Index

GrabIt Pro was designed especially for technical writers and graphic artists. New in version 4.1, is the ability to capture directly to your printer! Use the scroll bars to see more help topics. To learn how to use Help, press F1.

How To...

Capture Windows

- [Capture An Individual Window](#)
- [Capture The Client Area Of A Window](#)
- [Capture A Selected Area](#)
- [Capture A Menu And The Application Window](#)
- [Capture A Menu Only](#)
- [Capture An Application Window When It Is Running Full Screen](#)
- [Capture The Windows Desktop](#)
- [Capture A Selected Area Of A GrabIt Pro Child Window](#)
- [Capture A DOS Application or Screen](#)
- [Save A Capture To Disk](#)
- [Open A File](#)
- [Drag and Drop To Open A File](#)

Capture To The Printer

- [Capture A Selected Area](#)
- [Capture An Individual Window](#)
- [Capture The Windows Desktop](#)

Scale Printed Images

- [Scale Images](#)
- [Print A Capture Or Graphic File](#)

Other Info...

- [Convert To Different Formats](#)
- [Obtaining Technical Support](#)
- [The Right Mouse Button Popup Menus](#)
- [Accelerator Key Reference](#)
- [Shareware Registration Info and Form](#)



Capturing A Window [Print This Topic](#)

► To capture an entire window:

1. Select Entire Window from the Grab menu or press Ctrl + W
2. The GrabIt window will disappear and the cursor will change into a net with a crosshair.
3. Move the cursor to the Title Bar of the Window you wish to capture.
4. Click on the title bar.
5. Your capture will be displayed in a GrabIt Pro child window.



Capturing The Client Area [Print This Topic](#)



The client area of a window is that portion **below** the title bar and **inside** the border of the window.

► To capture the window client area only (no caption bar or border):

1. Select Client Area from the Grab menu or press Ctrl + C
2. The GrabIt window will disappear and the cursor will change into a net with a crosshair.
3. Move the cursor to the client area of the window you wish to capture.
4. Click on the client area.
5. Your capture will be displayed in a GrabIt Pro child window.



Capturing A Selected Area [Print This Topic](#)

► To capture selected a area of a GrabIt Pro Child Window:

1. Click on Selected Area from the Grab menu selection or press Ctrl + M
2. The GrabIt window will disappear and the cursor will change into a crosshair.
3. Move the cursor to the UPPER LEFT HAND CORNER of the area you wish to capture.
4. Press and HOLD the LEFT mouse button down.
5. As you move the mouse you will see that the area you are marking is shown in inverse video.
6. When you have marked the area you wish to capture release the left mouse button.
7. Your capture will be displayed in a GrabIt Pro child window.



Capturing A Menu and The Application Window [Print This Topic](#)



Capturing A Menu and the Application Window With GrabIt Pro

You may need to capture the pull down or popup menus of an application and the state of the application window at the time the menu selection is made for inclusion in program documentation or training manuals. GrabIt Pro uses the Enter Key as the HOT KEY for menu captures.

► To capture a menu and the application window at the same time:

1. Select Menu from the GrabIt Pro capture Menu or press CTRL + M
2. The GrabIt Pro Window will disappear.
3. Now switch back to the program that you want to capture a menu from.
4. Select the menu to display it.
5. Press **Enter** and GrabIt Pro will capture the menu that was displayed.
6. You will hear a beep to confirm that you captured the menu.
7. Your menu and window capture will be displayed in a GrabIt Pro child window.



Capturing A Menu Only

Print This Topic



Capturing Pull Down/Popup Menus Only

In order to capture only the menu, without the program window being displayed, you must first re-size the window of the program you want to capture the menu(s) from. This is an easy process:

► To Capture A Pull Down or Popup Menu:

1. Size the application window until it is the same size as the menu you wish to capture. Any portion of the menu that extends beyond the border of the window will NOT be captured. This can also be used to your advantage if you only want to capture a portion of the pull down menu.
2. When you are satisfied that the program window is sized correctly for the menu you want to capture.
3. Select Menu from the GrabIt Pro capture Menu or press CTRL + M
4. The GrabIt Pro Window will disappear.
5. Now switch back to the program that you want to capture a menu from.
6. Select the menu to display it.
7. Press **Enter** and GrabIt Pro will capture the menu that was displayed.
8. You will hear a beep to confirm that you captured the menu.
9. Your menu capture will be displayed in a GrabIt Pro child window.



Capturing An Application Running Full Screen

Print This Topic



- To capture an applications window when it is running full screen
 1. Start the program that you want to capture and then minimize it.
 2. Make sure that GrabIt Pro is running
 3. Switch to the other program and have it display the screen you want to capture.
 4. Hold down the Alt key and press the Tab Key.
 5. When the box in the middle of the screen reads GrabIt Pro, release the Alt Key.
 6. The GrabIt Pro window will now be displayed, choose capture desktop from the menu.
 7. Your applications screen will be captured.



Capturing A DOS Screen

Print This Topic



This example assumes you are running the DOS session full screen (not in a window).

- To capture a DOS screen or application:

Note: The client area of a window is that portion **below** the title bar and **inside** the border of the window.

1. Start your DOS application or a DOS Command Shell
2. When the information you want to capture is displayed, Press Alt + Enter
3. This will put you DOS screen in a window.
4. Choose Grab Client Area from the Main GrabIt Pro Menu
5. Click the cursor on the client area of the DOS window
6. You will now have your DOS screen captured without the title bar or window border

If you are going to include your DOS screen capture in a document we recommend that you save it as a monochrome bitmap and select the Invert Check Box. This will give you a very nice image with black text on a white background. By saving the image in monochrome format you will conserve disk space.

- Use the **Invert Option** to save DOS screen captures as black on white for superior clarity when printed. This lends a look of professionalism to your documents.



Capture The Windows Desktop [Print This Topic](#)

Capturing The Entire Windows Desktop

- To capture the entire Windows Desktop:
 1. Select Desktop from the Grab menu or press Ctrl + D
 2. The GrabIt window will disappear
 3. The GrabIt window will re-appear
 4. Your desktop capture will be displayed in a child window.

■ **Capture A Selected Area Of A GrabIt Pro Child Window**

Print

This Topic



- To capture selected a area of a GrabIt Pro Child Window:
 1. Move the cursor to the **upper left hand corner** of the area in the child window you want to capture.
 2. Press and HOLD the LEFT mouse button down. The cursor will change into the crosshair cursor.
 3. As you move the mouse you will see that the area you are marking is shown in inverse video.
 6. When you have marked the area you wish to capture release the left mouse button.
 7. Your capture will be displayed in a new GrabIt Pro child window.



Save A Capture To Disk

[Print This Topic](#)



Saving A Captured Image To Disk:

- To Save A Screen Capture:
 1. Choose File Save from the main menu, or press CTRL + S
 2. Enter the file name of the bitmap in the edit field.
 3. Enter the file name **including** the extension of either BMP or RLE. GrabIt Pro doesn't assume that every image you save will be a BMP or RLE file so it doesn't automatically add the file extension.

You can choose between various formats by selecting the Options Button on the save dialog. The options are as follows:

Image Format

Windows 3.X Bitmap
OS/2 2.0 Bitmap
RLE

Color Options

Monochrome/16 Colors/256 Colors/24 Bit Color/Inverse
Monochrome/16 Colors/256 Colors/24 Bit Color/Inverse
16 Colors/256 Colors/24 Bit Color/Inverse

For users making screen shots for documentation and other presentations, You can convert your screen shoots to monochrome on the fly by choosing the monochrome option when saving your screen captures.

The radio buttons are only functional for legitimate combinations of image and color options.

- Use the **Invert Option** to save DOS screen captures as black on white for superior clarity when printed. This lends a look of professionalism to your documents.



Open A File

[Print This Topic](#)

- To open a bitmap from disk:
 1. Select File from the main menu and choose Open, or press CTRL + O.
 2. You can select a bitmap from the list box, enter the drive and path to the bitmap you wish to use.
 3. Select the OK button, or press Enter to Open the image

■ **Convert To A Different Format** [Print This Topic](#) ■

■ ***Important information when converting from one format to another***

When converting from 24 Bit or 256 Color images to monochrome **MAKE A TEST IMAGE FIRST!** Some 256 color and higher drivers don't correctly support the standard windows color palette. As a result your image may be converted to solid black. This has been reported with several drivers and we want you to be sure your driver works properly before you save an image only to find out it was destroyed by the graphics driver.

You can safely convert 16 color bitmaps to monochrome when running a 16 color driver.

■ **Shareware Registration Form** Print Form ■

Software Excellence By Design Inc.
14801 North 12th Street
Phoenix, AZ 85022 USA

Special prices/discounts on quantity orders, Corporate site licenses, and dealer pricing is available.

Phone in your credit card order TOLL FREE at 1-800-468-1438. Master Card AMEX and Visa accepted. Phone orders are accepted Mon.-Fri. 9:00 a.m.-3:00 p.m. On-Line BBS Registration at 602-375-0531

Please allow 2 - 4 weeks for delivery.

I would like to register the following (check desired items below):

Available in 3.5" Media Size Only

Zip Manager Version 5.1

The ultimate archive file management tool for Windows and Windows NT

___ Copy(s) of the Single User Version @ \$49.95 ea. \$ _____
___ Copy(s) of the Network Version @ \$49.95 ea. \$ _____
___ Copy(s) of the Windows NT Version @ \$49.95 ea. \$ _____

NT Version For []Intel []MIPS [] DEC Alpha AXP Processor, Please Specify

GrabIt Pro Version 4.1

Screen Capture and Graphics Enhancement. Rated as the best screen capture program available for technical writers, programmers, and graphic artists

___ Copy(s) of the Windows 3.X Version @ \$39.95 ea. \$ _____
___ Copy(s) of the Windows NT Version @ \$39.95 ea. \$ _____

NT Version For []Intel []MIPS [] DEC Alpha AXP Processor, Please Specify

IconTamer 2.0

Complete icon management and editing.

___ Copy(s) of the Single User Version @ \$29.95 ea. \$ _____

ChartTamer 2.0

Create Presentation Quality 3D Charts of All Kinds Quickly and Easily. Small program size (only 202K) is perfect for notebook users who need quality charts!

___ Copy(s) of the Single User Version @ \$29.95 ea. \$ _____

Shipping \$3.00 Per Item, Outside the U.S. \$5.00 Per Item
AZ Residents please add Sales Tax@ 6.7%

Total Shipping \$ _____

Sub Total \$ _____

Tax \$ _____

Total \$ _____

Payment Information

Payment by : Check (In U.S. Funds) Money Order (In U.S.Funds)
Credit Card: Master Card Visa AMEX
Card #: _____ Exp. Date: _____

Signature of cardholder: _____
SIGNATURE REQUIRED

**Ship To Information
Type Or Print To Insure Proper Delivery**

Name: _____

Company: _____

Address: _____

Address: _____

City: _____ ST _____ Zip: _____

Country: _____

Phone W: _____ Eve: _____ Fax #: _____

Please help us determine the distribution of our software
Check The Box Below That Most Accurately Describes Where
You Acquired This Program.

- | | |
|---|--|
| <input type="checkbox"/> - Local BBS | <input type="checkbox"/> - Shareware Catalog |
| <input type="checkbox"/> - User Group | <input type="checkbox"/> - Software Store |
| <input type="checkbox"/> - CIS or Other National BBS | <input type="checkbox"/> - PC SIG Disk |
| <input type="checkbox"/> - GENie | <input type="checkbox"/> America On-Line |
| <input type="checkbox"/> A Friend | |
| <input type="checkbox"/> - Other - Please Specify _____ | |

GrabIt Pro is user supported software. Please help us by sending your comments, suggestions, and changes or additions you would like to see in future versions. Please send us a report if you happen to find a bug.

Our Address is:
Software Excellence By Design Inc.
14801 North 12th Street
Phoenix, AZ 85022 USA

■ **Accelerator Key Reference** Print Reference ■

Listed below are all of the keyboard shortcut keys.

Accelerator Key Reference

<u>Action</u>	<u>Key Combination</u>
Open A File	Ctrl + O
Save A File	Ctrl + S
Print A File	Ctrl + P
Copy A Graphic To The Clipboard	Ctrl + Insert
Paste A Graphic From The Clipboard	Shift + Insert
Capture A Selected Area Of The Screen	Ctrl + A
Capture The Entire Window	Ctrl + W
Capture The Client Area	Ctrl + C
Capture The Windows Desktop	Ctrl + D
Capture A Menu	Ctrl + M
Hide Window When Grabbing A Screen Shot	Ctrl + H

■ **Trouble Shooting Help**

Print This Topic ■

If you are having trouble with GrabIt Pro you have the following help options available to you.

Shareware Evaluation Users

You can get help by calling our BBS at 602-375-0531 (9400 Baud) or 602-375-9945 (14,400 Baud)

Leave a message to the sysop regarding your problem. You will have an answer in a few days.

You can Fax us with your problem at 602-375-9928. We will return your answer by Fax only so be sure to include your fax number with your question.

You can leave a message in our CompuServe mailbox. Our CIS ID number is 72200,576

Registered Users

You can use the options outlined above, and you have free unlimited direct phone help. Before you call for help YOU MUST HAVE YOUR REGISTRATION NUMBER READY. It will be the first thing we will ask you for when you call.

The tech support phone number is 602-375-9928 and is available from 9:00 am until 3:00 pm Monday - Friday.

Please Note: Arizona is on Mountain Standard Time All Year Long. When daylight savings is in effect we are the same time as the West Coast. The rest of the year we are on the same time as Denver, 1 hour later than the west coast.

Welcome To GrabIt Pro Version 4.1

New Features In Version 4.1 Are:

- **Capture Directly To The Printer** - Print Screen For Windows At Last!
- GrabIt Pro is now a Drag and Drop client.
- Right mouse button popup menus for child windows
- User defined image sizing and scaling options for printing
- An Invert feature when saving an image
- Save a capture in both BMP and RLE format.
- Convert color images to monochrome
- Size and attributes of a graphic available before you open it.
- Capture a window, client area, or selected area with a single command
- Mark selected areas of child windows and create a new image
- The number of screen captures limited only by system resources.
- Also available for Windows NT on the Intel, MIPS, and DEC Alpha AXP Chips.



Printing A Screen Or Bitmap

Print This Topic

- To print a screen capture or bitmap:
 1. Select the window that contains the image you want to print
 2. Select Print from the File Menu or press Ctrl + P
 3. The image you selected will be printed

■ Printing tips and driver information

Laser Printers

With GrabIt Pro you can print a screen capture or portion of a screen capture immediately after you have captured it. In addition you can load from disk and print any Windows bitmap. GrabIt Pro will convert to shades of gray all of the colors it can to give you an accurate hard copy representation of your captured screen. This gray scale dithering applies to Postscript and PCL laser printers only.

Image Scaling

GrabIt Pro now has complete user defined image scaling. See [Image Scaling](#) for complete information

Laser Jet Printer Problems

If you have a problem printing a bitmap, and you are using a HP LaserJet printer be sure that you obtain the new windows 3.1 HP LaserJet driver that is on the windows supplemental drivers disk. This disk is available on many BBS systems across the country, On-Line services like CompuServe and America On-Line, and directly from Microsoft.

Right Mouse Button Menu

GrabIt Pro now makes full use of your mouse by providing you with convenient right mouse button menus.

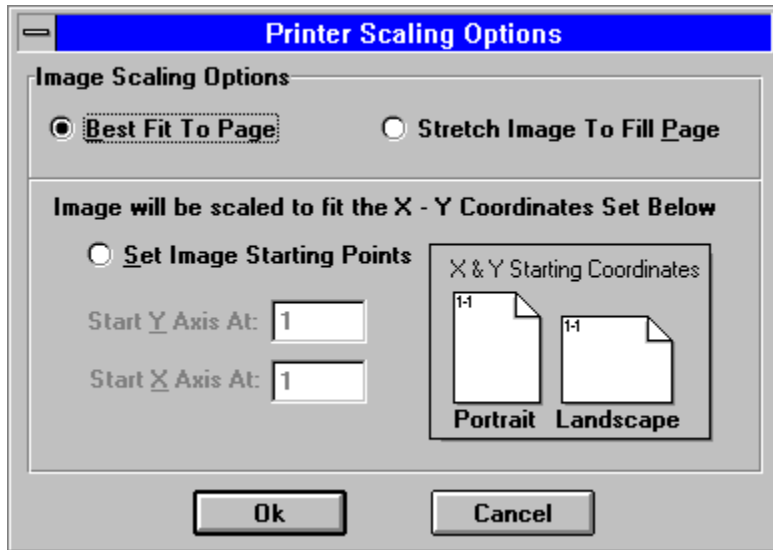
The right mouse button will popup a menu whenever you right click it on a child window. You can Open, Save, Copy and Paste to the Clipboard, and Print with a click of the right mouse button.

Sizing and Scaling an Image

[Print This Topic](#)

Now you have complete control over the size of the printed image produced by GrabIt Pro. The options are shown on the graphic below. Click on each item for a complete description.

- As noted elsewhere these features are only available in the registered version of GrabIt Pro.



Best Fit To Page

Best fit to page will do exactly what its name implies. It examines the currently defined paper in your printer and tries to print an image that will best fit **across** the page. This is the default setting and it works well on most screen printing jobs if the image is a window or desktop capture.

- As noted elsewhere these features are only available in the registered version of GrabIt Pro.

Stretch To Fill Page

Select this option if you want to print an extremely large image, or want the image to fill the page regardless of size.

- As noted elsewhere these features are only available in the registered version of GrabIt Pro.

Scale the X and Y axis for an exact image size

This is the most flexible option, but it will take some experimentation on your part. As shown in the graphic the X and Y coordinates start in the upper left hand corner of the page. There is no set formula for scaling the image, but remember that the entire image will be sized to fit in the rectangle you specify.

For example, if you enter 10 in both fields and print out a desktop capture you will end up with a tiny printed image of the desktop. By the same token if you specify a large area for an icon size image it will be stretched to fit the area. As stated above the only sure way to get the exact scaling for an image is to experiment with several different settings until the correct one is found your image.

- **PLEASE NOTE:** The scaling default is Best Fit To Page, so when you do a capture directly to the printer you get the best possible result. If you enter X and Y scaling options they are NOT saved from one session to another. Since every image is different it would not make sense to save individual image X and Y numbers. If you capture the same screen many times, write down for future reference the X and Y values that worked best for that image.
- As noted elsewhere these features are only available in the registered version of GrabIt Pro.

■ **Capturing A Window To The Printer**

Print This Topic ■

When you capture a window to the printer your screen capture is also put into a GrabIt Pro window. This gives you confirmation on what exactly was sent to the printer. You can save this to disk as a digital representation of your print screen, or close it as needed.

■ As noted elsewhere these features are only available in the registered version of GrabIt Pro.

■ To capture an entire window to the printer:

1. Select Entire Window from the Grab To Printer menu
2. The GrabIt window will disappear and the cursor will change into a net with a crosshair.
3. Move the cursor to the Title Bar of the Window you wish to capture.
4. Click on the title bar.
5. The window will be sent directly to the printer as soon as the left mouse button is released.

■ **Capturing The Desktop To The Printer**

Print This Topic ■

When you capture the Windows Desktop to the printer your capture is also put into a GrabIt Pro window. This gives you confirmation on what exactly was sent to the printer. You can save this to disk as a digital representation of your print screen, or close it as needed.

■ As noted elsewhere these features are only available in the registered version of GrabIt Pro.

■ To capture the Windows Desktop to the printer:

1. Select Window Desktop from the Grab To Printer menu
2. The GrabIt window will disappear
3. The GrabIt window will re-appear
4. Your desktop capture is sent directly to the printer.

■ **Capturing A Selected Area To The Printer**

Print This Topic ■

- As noted elsewhere these features are only available in the registered version of GrabIt Pro.
- To capture a selected area to the printer:
 1. Click on Selected Area from the Grab menu selection or press Ctrl + M
 2. The GrabIt window will disappear and the cursor will change into a crosshair.
 3. Move the cursor to the UPPER LEFT HAND CORNER of the area you wish to capture.
 4. Press and HOLD the LEFT mouse button down.
 5. As you move the mouse you will see that the area you are marking is shown in inverse video.
 6. When you have marked the area you wish to capture release the left mouse button.
 7. Your capture is sent directly to the printer.

■ **Drag and Drop Files To Open Them**

[Print This Topic](#) ■

GrabIt Pro is a drag and drop client, this means that you can drag files from the windows file manager and drop them on the GrabIt Pro window to open them. You can drop as many files as you want, up to the point where your system runs out of resources available to open them. When this occurs, or if you drag and drop a file that isn't a bitmap GrabIt Pro will inform you with the appropriate error message.

